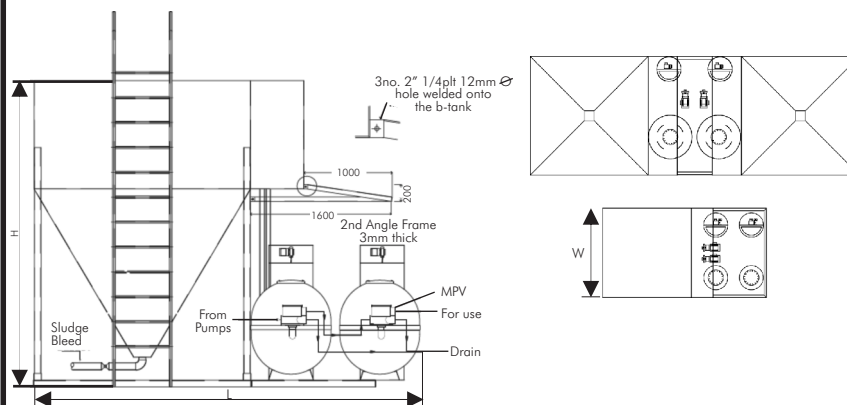




WP Water Treatment Plants



EQUIPMENT LAYOUT



The DAYLIFF 'WP' Range of water treatment plants are the ideal solution of hygienic small scale water supplies in isolated areas where mains water is unavailable. The range has evolved over many years of development and is an extremely effective combination of the latest technology components with tried and tested production experience.

Treatment provided is conventional flocculation, sedimentation, chlorination and filtration process which is an effective solution for the removal of suspended particles and organic pollution found in the majority of surface waters in the region. Provided excessive inorganic pollution found in the majority of surface waters in the region. Provided excessive inorganic pollution is not present, extremely high quality potable water is available.

Four basic models are available, all with the following features:-

- High efficiency vertical flow steel plate sediment basin
- Automatic chemical dosage of Flocculant & Chlorine
- Options of one or two quality DAYLIFF or similar filter pumps which provide sufficient pressure for delivery to adjacent clear water tanks. The pumps are fully wired and connected with necessary controls provided.
- Double filtration through two series connected pressure sand filters. When combined with specially graded filter media the result is especially high quality filtration.
- Fully automatic operation - the quality of water produced is automatically regulated by site demand
- Totally integrated units (skid mounted except for WP 1000 model) for simple site installation. The treatment plants are complete from the raw water inlet to the clear water outlet so all that is required for installation is a concrete plinth, piping and electrical connections.

Sedimentation Basin: Rectangular section upward flow basins with conical base, sludge bleed and integral balance tank.

Filters: 2 No series connected DAYLIFF 'CX' GRP pressure sand filters with simple to use multiport valves and rated upto 3 Bar operating pressure.

Chemical Dosage: Dosage of Alum and Chlorine is offered as standard with other chemical options being available to suit site conditions. A pumped dosage system is provided using DAYLIFF SEKO chemical dosing pumps drawing from 170L GRP concentrate tanks.

Pumps: DAYLIFF DB type multistage horizontal centrifugal pumps with integral motors. All models are for 240V single phase power supply. Alternative equivalent models may be supplied for particular applications. Solar Power Option is available on request.

OPERATING CONDITIONS

Raw Water Quality: Surface waters containing suspended solids and bacteria. The plants are not suitable for treatment of any dissolved solids including hardness and salinity.

Max. Water Temperature: +40°C

SPECIFICATIONS

MODEL	OUTPUT (m ³ /hr)	BASIN CAPACITY (m ³)	STANDARD FILTER PUMP		DIMENSIONS (mm)				
					PLANT			PLINTH	
			Model	Motor	H	L	W	PL	PW
WP 150	1.5	3	DB 4-40	0.96kW	2600	3000	1500	4000	2500
WP 250	2.5	5.5			3200	3000	1800	4600	2800
WP 500	5	10	DB 8-30	1.1kW	3500	4400	2400	5400	3400
WP 1000	10	20	DB 12-30	1.6kW	3500	7000	2400	8000	3400